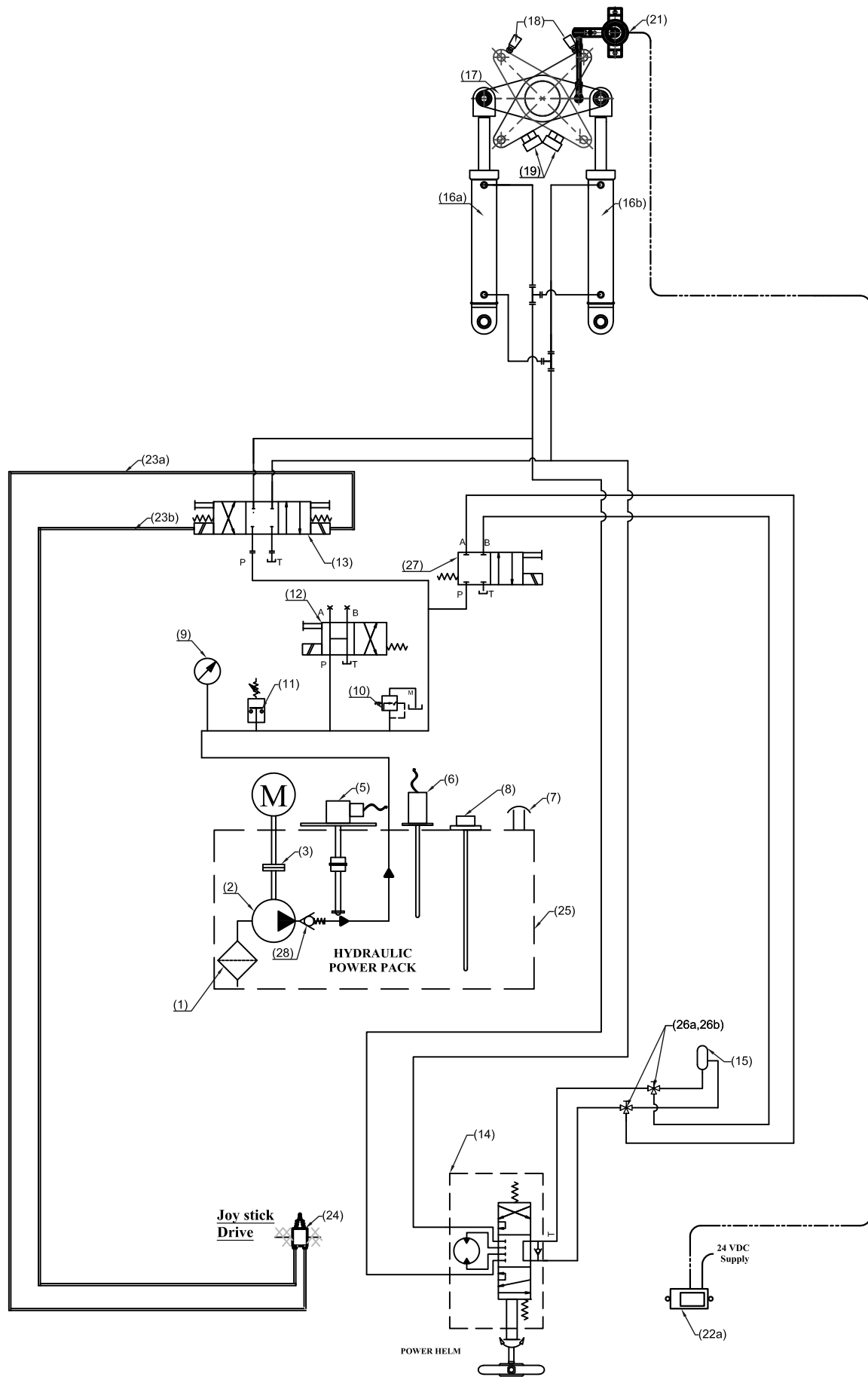


Electro-Hyd. Circuit - JumboZ-300E with Joystick Control-Power Helm



**MAC ♦ N ♦ HOM SYSTEMS
KOCHI - 20**

DESIGNATION

Electro-Hydro. Circuit of JumboZ-300E
-Joystick -Power Helm

DWG. No.

MHS-1826
Page 1 of 2

DATE

24.03.2023

A

B

C

D

E

F

G

H

Electro-Hyd. Circuit - JumboZ-300E with Joystick Control-Power Helm

SI No.	Description
1	Suction Strainer
2	Hydraulic pump
3	Flexible Coupling
4	Electric Motor
5	Oil Level Sensor
6	Oil Temp. Sensor
7	Filler Breather
8	Oil Dip Stick
9	Pressure Gauge
10	Pr.Relief Valve
11	Pre.Switch.Low Pre.Alarm
12	Unloading Valve
13	Sol. Opertd. Dire. Control Valve
14	Power Helm Pump
15	Flanged Reservoir
16a,16b	Hyd. Actuator - JumboZ 300
17	Tiller Arm
18	Limit Switch
19	Mechanical Stopper- (Yard Supply)
20	Oil Reservoir
21	Rudder Angle Sensor
22	Rudder Angle Indicator
23a,23b	Elec. Lines to Sol.Opertd. Valve
24	Joystick
25	Power pack Tank
26a,26b	3 Way Ball Valve
27	Single Solenoid Valve
28	Non-Return Valve



**MAC ♦ N ♦ HOM SYSTEMS
KOCHI - 20**

DESIGNATION

DWG. No.

DATE

Electro-Hydro. Circuit of JumboZ-300E
Joystick -Power Helm

MHS-1826
Page 2 of 2

24.03.2023

A

B

C

D

E

F

G

H